

093.21-093.24

093.21-093.24 Syphilitic endocarditis

Lay Description

This code subclassification refers to endocarditis affecting the valves of the heart due to a syphilis infection with code selection based on the specific heart valve affected. Code 093.21 indicates the mitral valve, which is the opening that separates the left atrium and left ventricle. Code 093.22 indicates the aortic valve, which is the opening that separates the aorta and the left ventricle. Code 093.23 indicates the tricuspid valve, which is the opening that separates the right atrium and right ventricle. Code 093.24 indicates the pulmonary valve, which is the opening that separates the pulmonary body from the right ventricle.

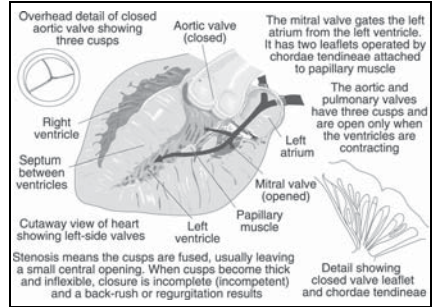
General Symptoms

- Altered mental status
- Aphasia
- Arrhythmia
- Emboli
- Fever
- Heart murmur
- Lesions on palms of hands and/or soles of feet
- Nailbed lesions
- Neck pain with/without distended veins
- Petechiae
- Tenderness located distally on fingers/toes

Associated Conditions

- Anemia
- Cardiomyopathy
- Congenital heart defects
- Leukocytosis
- Other heart valve conditions
- Prosthetic heart valve(s)

Aortic Valve Procedures



- Proteinuria
- Rheumatic fever causing heart valve damage

Differential Diagnoses

- Connective tissue disease
- Infection within the abdomen
- Pulmonary infection
- Unexplained fever

Disease Progression

Progression depends on extent of disease, age, and underlying conditions. Endocarditis can lead to congestive heart failure.

Complications and Sequelae

- Autoimmune diseases
- Emboli
- Tissue damage

Diagnostic Procedures

- Blood cultures
- Cardiac catheterization
- Chest x-ray
- CT scan
- Echocardiography

- Electrocardiography
- Ventilation/perfusion scan

Prognosis and Treatment

Treatment depends on the extent of the disease; and hospitalization with oxygen and antibiotics may be necessary.

Associated Medications

- Gentamicin
- Linezolid
- Nafcillin
- Penicillin
- Rifampin
- Vancomycin

Terms

anemia. Deficiency in the blood whether in red blood cells, hemoglobin, or total blood count.

aphasia. Partial or total loss of the ability to comprehend language or communicate.

arrhythmia. Irregular heartbeat.

cardiomyopathy. General term used to describe a number of conditions of the heart muscle.

emboli. An unnatural particle disseminating within the blood stream.

leukocytosis. Abnormal increase in white blood cells.

petechiae. Small blood spots visible on the skin surface.

Coding Tips

If documentation indicates *exposure to syphilis* V01.6, and for carrier of syphilis, report code V02.8. Cardiovascular complications may occur in conjunction with neurosyphilis and when this is documented, codes from both the 093 and 094 categories should be reported.

244.0-244.9

244.0-244.9 Acquired hypothyroidism

Lay Description

This condition can be quite common where the thyroid gland underproduces hormones and affects many functions of the human body. The classifications in this code set are specific to the underlying cause of the decreased production.

Code 244.0 is specific to hypothyroidism as a result of surgery, typically removal of all or part of the thyroid gland. In cases where surgery removes the thyroid due to cancer or an unmanageable overactive thyroid gland, this is expected and shifts the condition to something that can be medically treated and controlled.

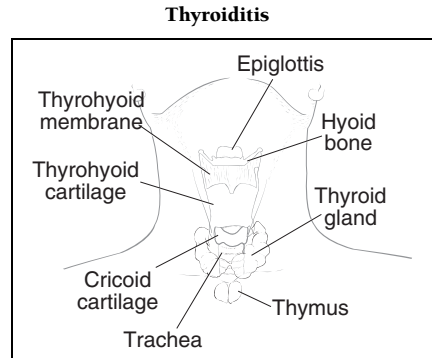
Code 244.1 is specific to hypothyroidism as a result of medical therapy such as radiation, which is a typical side effect of the treatment and usually surfaces within a year of treatment.

Code 244.2 is specific to hypothyroidism as a result of iodide ingestion or administration, which may occur when patients are being treated with iodine for other conditions.

Code 244.3 is specific to hypothyroidism as a result of medical treatment with drugs such as: P-aminosalicylic acid [PAS], Phenylbutazone, and Resorcinol, or any other medical drug treatment that precipitates the decreased thyroid function.

Code 244.8 is specific for other acquired hypothyroidism, such as secondary or central hypothyroidism. In this condition the decrease in thyroid production is a result of deficient operation within the pituitary gland or hypothalamus.

Code 244.9 is reserved for unspecified causes of hypothyroidism or myxedema, which is a severe case of hypothyroidism with classic characteristics including edema.



There is some information that indicates this condition is more common among women, especially those with low birth weight and smaller body masses in the childhood years. Additionally, this condition is more common in whites than people of Hispanic or African American ethnicity. The risk of this condition also increases with age.

General Symptoms

- Apparent weight gain
- Brittle fingernails
- Cold intolerance
- Constipation
- Decreased sweating
- Depression
- Dry, flaky skin
- Hair loss
- Hearing loss
- Hoarse/tight throat
- Lethargy
- Memory problems
- Menstrual irregularity
- Muscle/joint pain
- Puffy appearance and/or edema
- Vision disturbance

Associated Conditions

- Anemia
- Cardiac tamponade
- Hypercholesterolemia
- Hypoglycemia
- Hypothermia
- Larynx polyp
- Microcephaly
- Myocardial infarction
- Nasal obstruction
- Obesity
- Sinus bradycardia
- Xeroderma

Related Conditions

- Hyperlipidemia
- Hyponatremia
- Hypothalamus tumor
- Personal history of brain radiation
- Pituitary adenoma

Differential Diagnoses

- Addison disease
- Anovulation
- Sleep apnea
- Chronic fatigue syndrome
- Dysmenorrhea
- Eosinophilia
- Fibromyalgia
- Ileus
- Lymphoma
- Mononucleosis
- Pericardial effusion
- Polyglandular autoimmune syndrome

Complications and Sequelae

- Adrenal crisis
- Fetal abnormalities
- Impaired cardiac function
- Infertility
- Myxedema coma

- Vision difficulties

Diagnostic Procedures

- Blood cultures
- Chest x-ray
- Fine-needle aspiration
- MRI
- Physical exam to evaluate blood pressure, temperature, and heart rate
- Thyroid function studies
- Ultrasound

Prognosis and Treatment

Treatment is initiated to replace lacking hormones normally produced by the body.

- Diet
- IV therapy, oxygen, fluids, hospital admission in cases of myxedema
- Steroids
- Surgery

Early treatment is the key to correcting this condition; however some patients may require lifelong medication to maintain control of disease and balance of hormone production. Lack of treatment leads to symptom exacerbation and additional metabolic problems.

Associated Medications

- Desiccated thyroid
- Levothyroxine
- Liothyronine

Terms

Anemia. Deficiency in the blood whether in red blood cells, hemoglobin, or total blood count.

Anovulation. Abnormal condition in which an ovum is not released each month.

Eosinophilia. Abnormally large accumulation or formation of eosinophils (nucleated, granular leukocytes) in the blood.

Fibromyalgia. A chronic condition associated with pain and tenderness in various muscle groups.

Hypercholesterolemia. Increased levels of cholesterol found in the blood.

Hyperlipidemia. Elevated levels of fat and lipids found in the blood.

Hypoglycemia. Abnormally low blood glucose level.

Hyponatremia. Decreased, deficient levels of sodium in the blood.

Hypothermia. Decrease in body temperature.

Lethargy. Decreased awareness typically associated with a malfunction within the brain.

Myocardial infarction. Obstruction of circulation to the heart, resulting in necrosis.

Sinus bradycardia. Decrease sinus rhythm, that which is less than 60 beats per minute.

Xeroderma. A skin condition that presents as dry, rough, scaly appearance of the skin.

Coding Tips

For the 244 classification, codes pertain to:

- Athyroidism (acquired)
- Hypothyroidism (acquired)
- Myxedema (adult)(juvenile)
- Thyroid (gland) insufficiency (acquired)
- When this condition is documented as a pregnancy complication, see code series 648.

AHA References

3Q, 1999, 19; 4Q, 1996, 29; J-A, 1985, 9